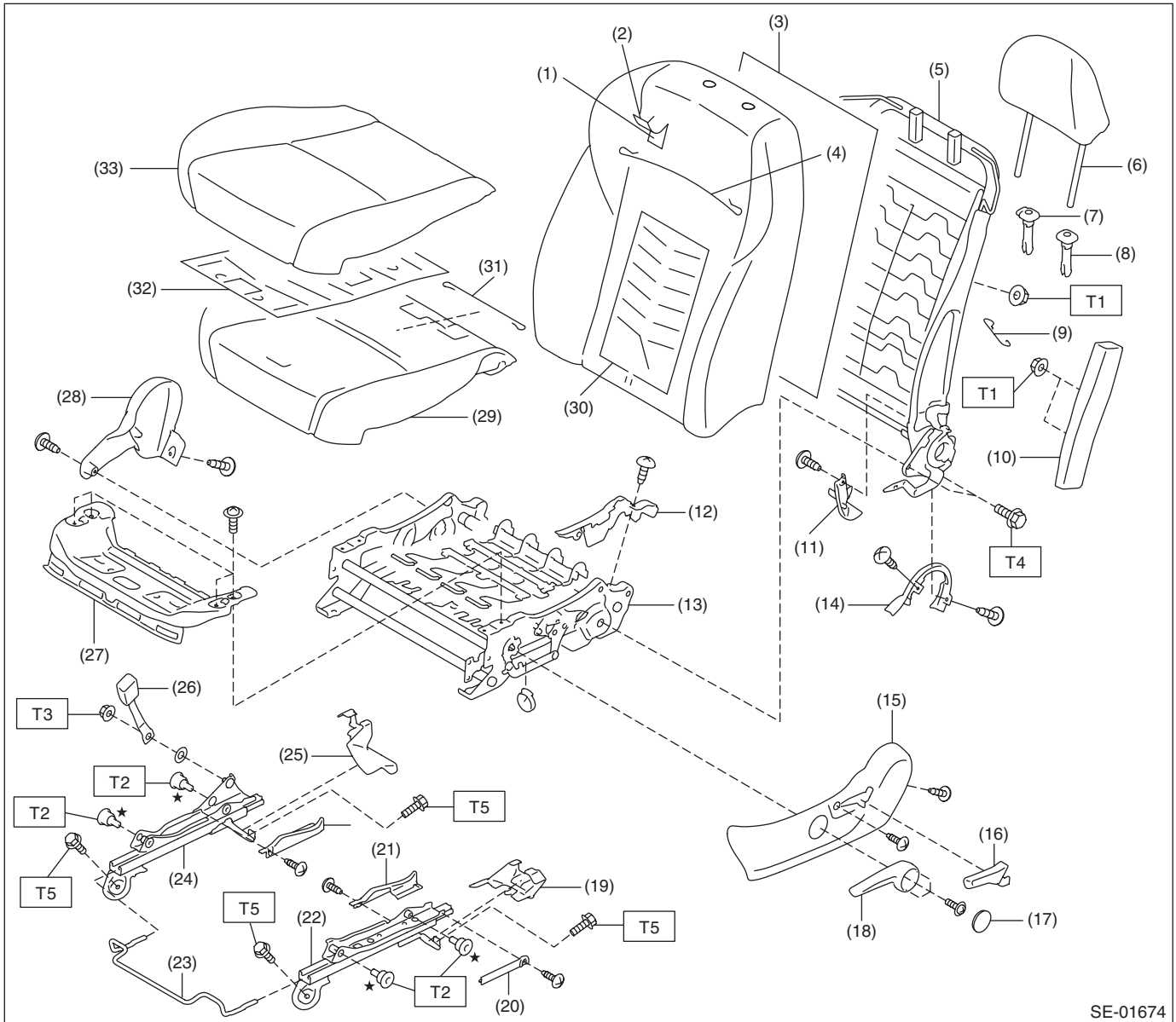


## 1. General Description

### A: COMPONENT

#### 1. FRONT SEAT

- Manual seat LH



# General Description

SEATS

(1) Pad ASSY - front seat backrest	(15) Cover - hinge front seat OUT	(29) Pad ASSY - front seat cushion
(2) Cover COMPL - front backrest	(16) Lever - reclining	(30) Heater unit - front seat backrest
(3) Cover - silencer front seat backrest	(17) Cap - lifter lever	(31) Wire set - front seat cushion
(4) Wire set - front seat backrest	(18) Knob - lifter	(32) Heater unit - front seat cushion
(5) Frame ASSY - front backrest	(19) Cover - bolt rear OUT	(33) Cover - front cushion
(6) Headrest ASSY - front	(20) Cover - slide rail OUT	
(7) Bushing - lock headrest	(21) Cover - slide rail OUT	
(8) Bushing - free headrest	(22) Slide rail ASSY - OUT	
(9) Hook - backrest front	(23) Lever - towel bar	
(10) Side airbag module LH	(24) Slide rail ASSY - INN	
(11) Cover - inner front	(25) Cover - bolt rear INN	
(12) Cover - frame front cushion	(26) Seat belt inner - front	
(13) Frame ASSY - front cushion	(27) Panel - front seat	
(14) Cover - hinge base front seat	(28) Cover - hinge front seat INN	

---

## ***Tightening torque: N·m (kgf-m, ft-lb)***

***T1: 6 (0.6, 4.4)***

***T2: 15 (1.5, 11.1)***

***T3: 38 (3.9, 28.0)***

***T4: 52 (5.3, 38.4)***

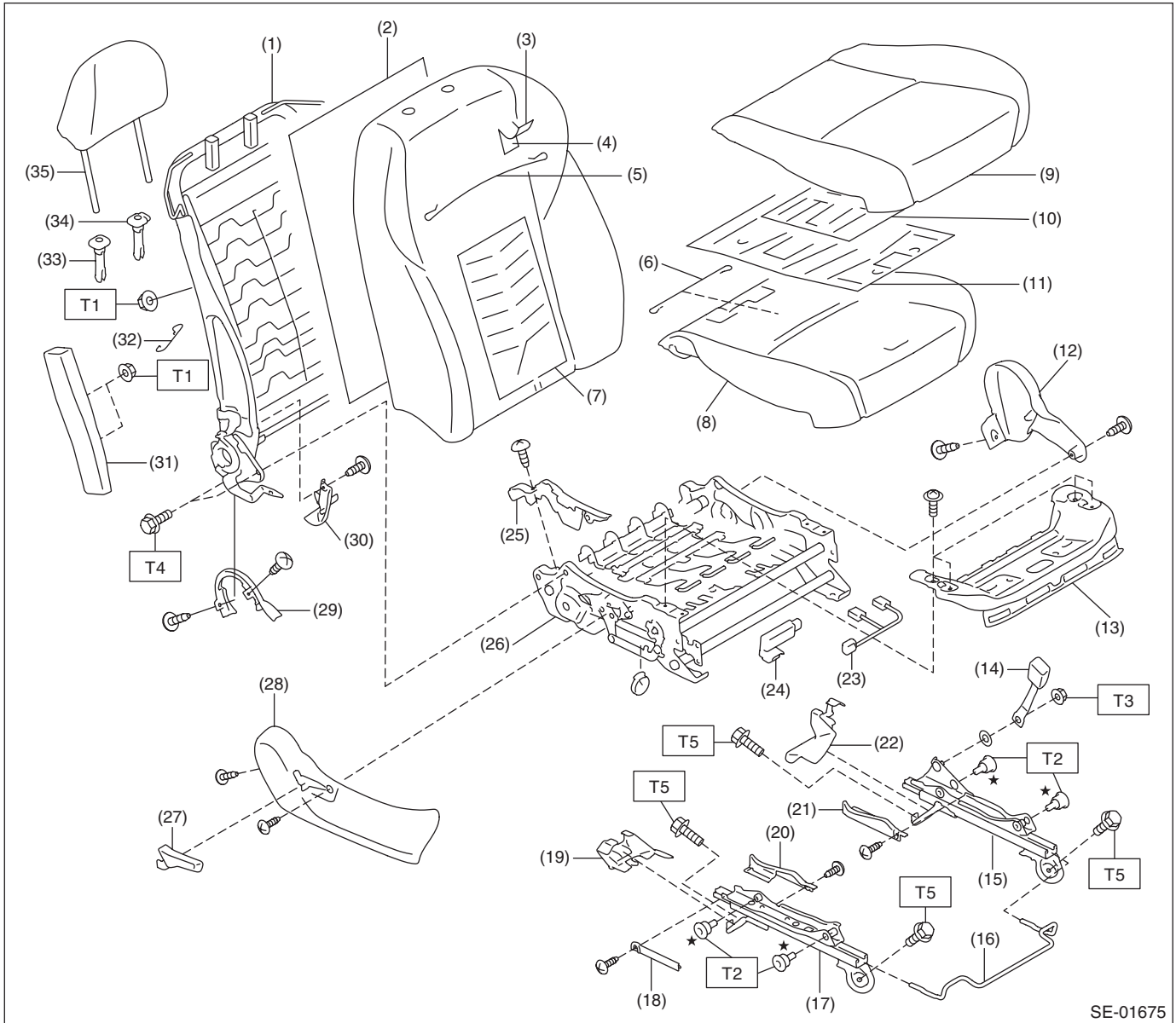
***T5: 53 (5.4, 39.1)***

---

# General Description

## SEATS

- Manual seat RH



# General Description

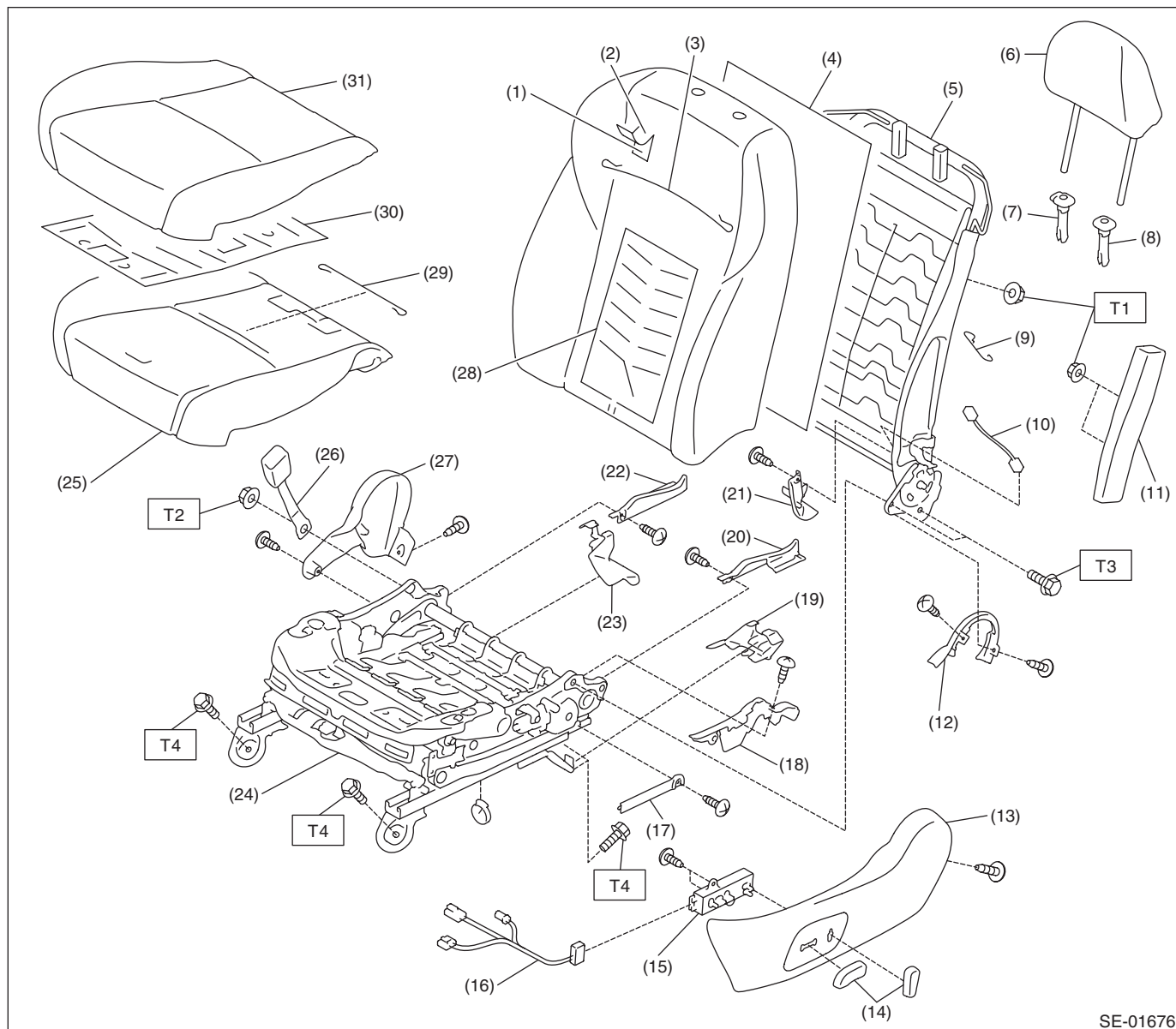
SEATS

(1) Frame ASSY - front backrest	(15) Slide rail ASSY - INN	(29) Cover - hinge base front seat
(2) Cover - silencer front seat backrest	(16) Lever - towel bar	(30) Cover - inner front
(3) Cover COMPL - front backrest	(17) Slide rail ASSY - OUT	(31) Side airbag module RH
(4) Pad ASSY - front seat backrest	(18) Cover - slide rail OUT	(32) Hook - backrest front
(5) Wire set - front seat backrest	(19) Cover - bolt rear OUT	(33) Bushing - lock headrest
(6) Wire set - front seat cushion	(20) Cover - slide rail OUT	(34) Bushing - free headrest
(7) Heater unit - front seat backrest	(21) Cover - slide rail INN	(35) Headrest ASSY - front
(8) Pad ASSY - front seat cushion	(22) Cover - bolt rear INN	
(9) Cover - front cushion	(23) Harness - occupant detection sensor	<b>Tightening torque: N-m (kgf-m, ft-lb)</b>
(10) Heater unit - front cushion	(24) Control unit - occupant detection sensor	<b>T1: 6 (0.6, 4.4)</b>
(11) Occupant detection sensor	(25) Cover - frame front seat cushion	<b>T2: 15 (1.5, 11.1)</b>
(12) Cover - hinge front seat INN	(26) Frame ASSY - front seat cushion	<b>T3: 38 (3.9, 28.0)</b>
(13) Panel - front seat	(27) Lever - reclining	<b>T4: 52 (5.3, 38.4)</b>
(14) Seat belt inner - front	(28) Cover - hinge front seat OUT	<b>T5: 53 (5.4, 39.1)</b>

# General Description

## SEATS

### • Power seat



SE-01676

(1) Pad ASSY - front seat backrest	(14) Knob - power seat	(27) Cover - hinge front seat INN
(2) Cover COMPL - front backrest	(15) Switch ASSY - power seat	(28) Heater unit - front seat backrest
(3) Wire set - front seat backrest	(16) Harness ASSY - power seat	(29) Wire set - front seat cushion
(4) Cover - silencer front seat backrest	(17) Cover - slide rail OUT	(30) Heater unit - front cushion
(5) Frame ASSY - front backrest	(18) Cover - frame front seat cushion	(31) Cover - front cushion
(6) Headrest ASSY - front	(19) Cover - bolt rear OUT	
(7) Bushing - lock headrest	(20) Cover - slide rail OUT	
(8) Bushing - free headrest	(21) Cover - inner front	
(9) Hook - backrest front	(22) Cover - slide rail INN	
(10) Harness ASSY - power seat	(23) Cover - bolt rear INN	
(11) Side airbag module	(24) Frame ASSY - front cushion	
(12) Cover - hinge base front seat	(25) Pad ASSY - front seat cushion	
(13) Cover - hinge front seat OUT	(26) Seat belt inner - front	

#### **Tightening torque: N-m (kgf-m, ft-lb)**

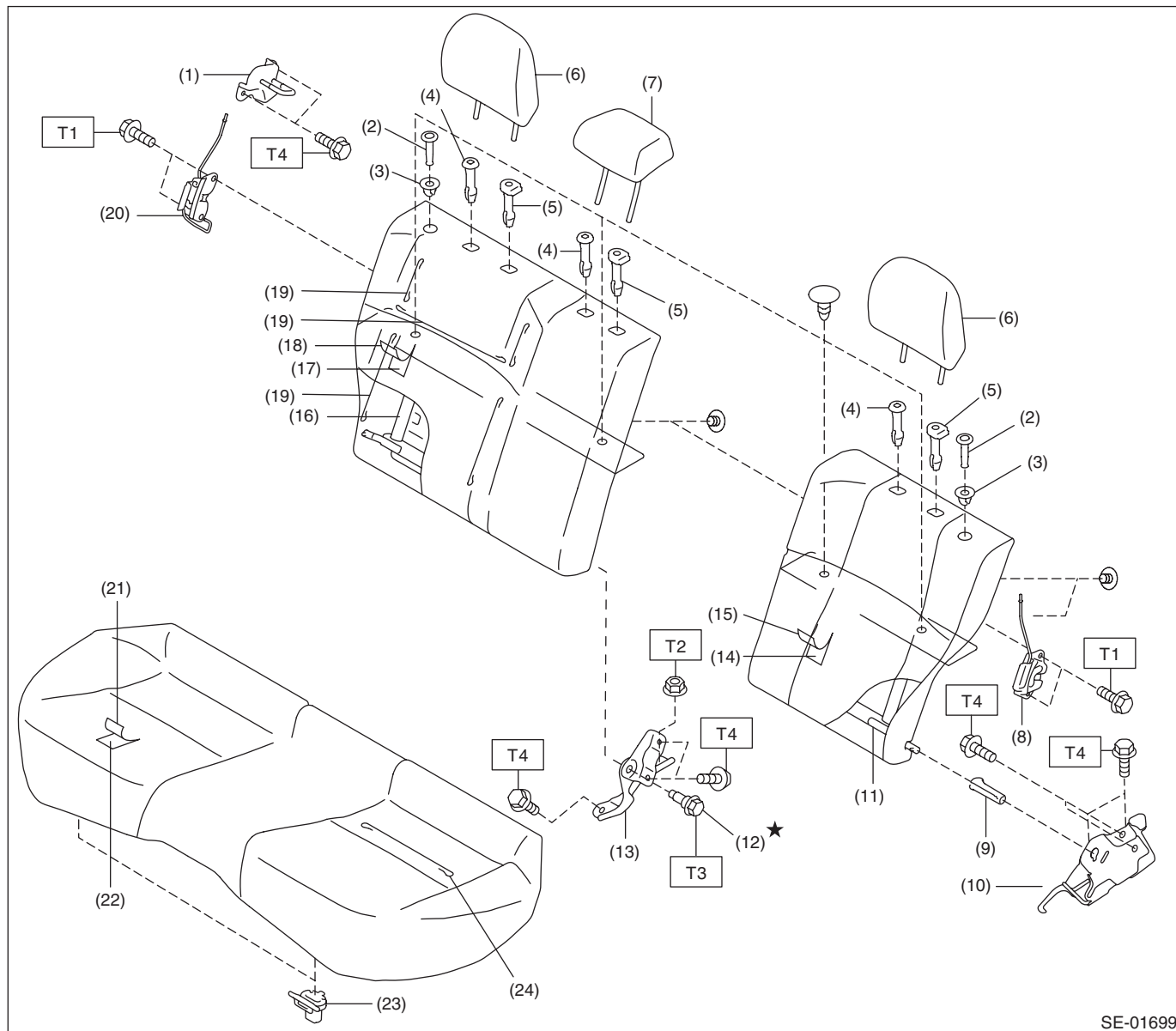
**T1: 6 (0.6, 4.4)**

**T2: 38 (3.9, 28.0)**

**T3: 52 (5.3, 38.4)**

**T4: 53 (5.4, 39.1)**

## 2. REAR SEAT



SE-01699

- (1) Striker - backrest rear RH
- (2) Knob - backrest rear
- (3) Knob - guide
- (4) Bushing - headrest
- (5) Bushing - lock ASSY
- (6) Headrest ASSY - rear backrest
- (7) Headrest ASSY - rear center
- (8) Lock ASSY - backrest rear LH
- (9) Bushing - backrest hinge
- (10) Hinge ASSY - rear backrest
- (11) Frame ASSY - rear backrest LH

- (12) Flange bolt
- (13) Hinge ASSY - backrest center
- (14) Pad ASSY - rear seat backrest LH
- (15) Cover COMPL - rear backrest LH
- (16) Frame ASSY - rear backrest RH
- (17) Pad ASSY - rear seat backrest RH
- (18) Cover COMPL - rear backrest RH
- (19) Wire set - rear backrest
- (20) Lock ASSY - backrest rear RH
- (21) Cover - rear cushion
- (22) Pad and frame ASSY - rear cushion

- (23) Hook - seat cushion rear
- (24) Wire set - rear cushion

### Tightening torque: N-m (kgf-m, ft-lb)

**T1: 22.5 (2.3, 16.6)**

**T2: 24.5 (2.5, 18.1)**

**T3: 28.9 (2.9, 21.3)**

**T4: 33 (3.4, 24.3)**

## General Description

SEATS

---

### B: CAUTION

When removing the front seat from the vehicle, refer to “CAUTION” of “General Description” in “AIRBAG SYSTEM” section. <Ref. to AB-9, CAUTION, General Description.>

### C: PREPARATION TOOL

#### 1. GENERAL TOOL

TOOL NAME	REMARKS
Long nose plier	Used for removing the hog ring.
Hog ring pliers	Used for installing the hog ring.
Circuit tester	Used for measuring resistance and voltage.